

How to Use this Guide	Who We Are	Featured Products	IF YOU ARE SELLING...				IF YOU ARE PROSPECTING			
			Wi-Fi APs & Controllers	Network Switches 1G/10G/Multi-Gig	PoE / IoT Devices	Cybersecurity	Troubleshooting & Securing Wi-Fi Networks	Network Health & Troubleshooting	Help Desk	Cybersecurity Teams



2024 Selling Reference Guide



Network Test, Analysis, & Cybersecurity Solutions

How to Use this Guide	Who We Are	Featured Products	IF YOU ARE SELLING...				IF YOU ARE PROSPECTING			
			Wi-Fi APs & Controllers	Network Switches 1G/10G/Multi-Gig	PoE / IoT Devices	Cybersecurity	Troubleshooting & Securing Wi-Fi Networks	Network Health & Troubleshooting	Help Desk	Cybersecurity Teams

How to Use This Guide

If you know the product in which the customer is interested, select Featured Products from the top navigation, then select the desired product.

To add NetAlly products onto the sale of other network or cyber security products to a customer and your not sure which product to recommend, select the applicable category under the plum top navigation bar “**IF YOU ARE SELLING...**”. Follow the question and answers to guide you to the appropriate product and supporting information.

If you are prospecting to a potential customer, select the applicable category under the green top navigation bar. “**IF YOU ARE PROSPECTING...**”. Follow the question and answers to guide you to the appropriate product and supporting information.

For more information, click the following icons on each product page:



Product Video



Web Page



Documents



How to Use this Guide	Who We Are	Featured Products	IF YOU ARE SELLING...				IF YOU ARE PROSPECTING			
			Wi-Fi APs & Controllers	Network Switches 1G/10G/Multi-Gig	PoE / IoT Devices	Cybersecurity	Troubleshooting & Securing Wi-Fi Networks	Network Health & Troubleshooting	Help Desk	Cybersecurity Teams

Testing you can trust, from a reliable ally.

For decades our family of innovative network test solutions have been helping network engineers and technicians better manage, maintain, and secure today’s complex wired and wireless networks.

For more than 30 years, we have been the #1 ally of network professionals worldwide. We began by making the world’s first handheld network analyzer – the LANMeter® – and have continued as industry pacesetters ever since, setting the standard for portable network testing and assessment.

When it comes to innovative, reliable, best-in-class portable network testing and edge security solutions, NetAlly is the name to trust. Our leading-edge, highly responsive tools get the job done fast by...

- Simplifying the complexities of network testing and security assessment
- Providing instant visibility for efficient problem solving and vulnerability detection
- Enabling seamless collaboration between site personnel and remote experts



simplicity

- Eliminate wasted time with a simple, fast AutoTest, which makes novices more productive and experts more efficient
- Installation validation report provides proof of performance
- Standardized procedures ensure the job is done right, consistently



visibility

- See issues others cannot
- More people can solve more problems on their own
- Solve problems with fewer tools
- Faster mean time to resolution



collaboration

- Facilitating collaboration speeds problem resolution and frees up team resources
- Automated documentation speeds future projects and troubleshooting
- Easy report generation and sharing stops finger-pointing

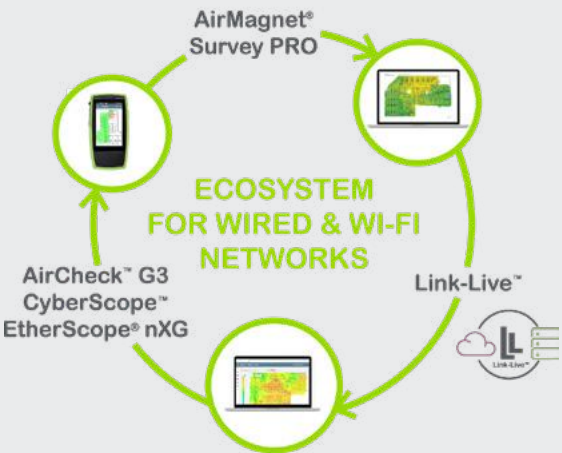
AirMapper™ Ecosystem

Cost-effective Wi-Fi design, site survey & troubleshooting solution

The AirMapper Ecosystem is a suite of interoperable products that speed and simplify wired and Wi-Fi network planning, installation, validation, and troubleshooting.

NetAlly is the first to offer site survey data collection and network discovery in powerful handheld instruments, with complete infrastructure and heat mapping in the Link-Live™ collaboration, reporting, and analysis platform or AirMagnet™ Survey PRO.

With the AirMapper Ecosystem, your customers can design a Wi-Fi network with AirMagnet Survey PRO, quickly perform a validation site survey using the AirMapper app on the AirCheck™ G3, CyberScope®, EtherScope® nXG, and easily collaborate through the use of Link-Live.




How to Use this Guide	Who We Are	Featured Products	IF YOU ARE SELLING...				IF YOU ARE PROSPECTING			
			Wi-Fi APs & Controllers	Network Switches 1G/10G/Multi-Gig	PoE / IoT Devices	Cybersecurity	Troubleshooting & Securing Wi-Fi Networks	Network Health & Troubleshooting	Help Desk	Cybersecurity Teams


Featured Products




AirCheck™ G3 Pro
Wi-Fi 6 Wireless Analyzer




CyberScope®
Edge Network Vulnerability Scanner




EtherScope® nXG
Portable Network Expert




LinkRunner® 10G
Advanced 10G Network & Cable Tester




AirMapper™
Site Survey App



LinkRunner® AT 4000
Advanced Ethernet Tester



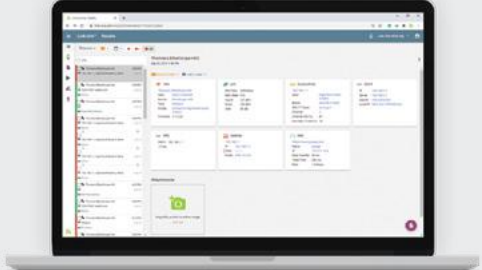
LinkRunner® AT 3000
Copper & Fiber Ethernet AutoTester



LinkSprinter®
Pocket Network Tester



AirMagnet® Survey PRO
Wi-Fi Design & Analysis



Link-Live™ Collaboration,
Reporting, & Analysis

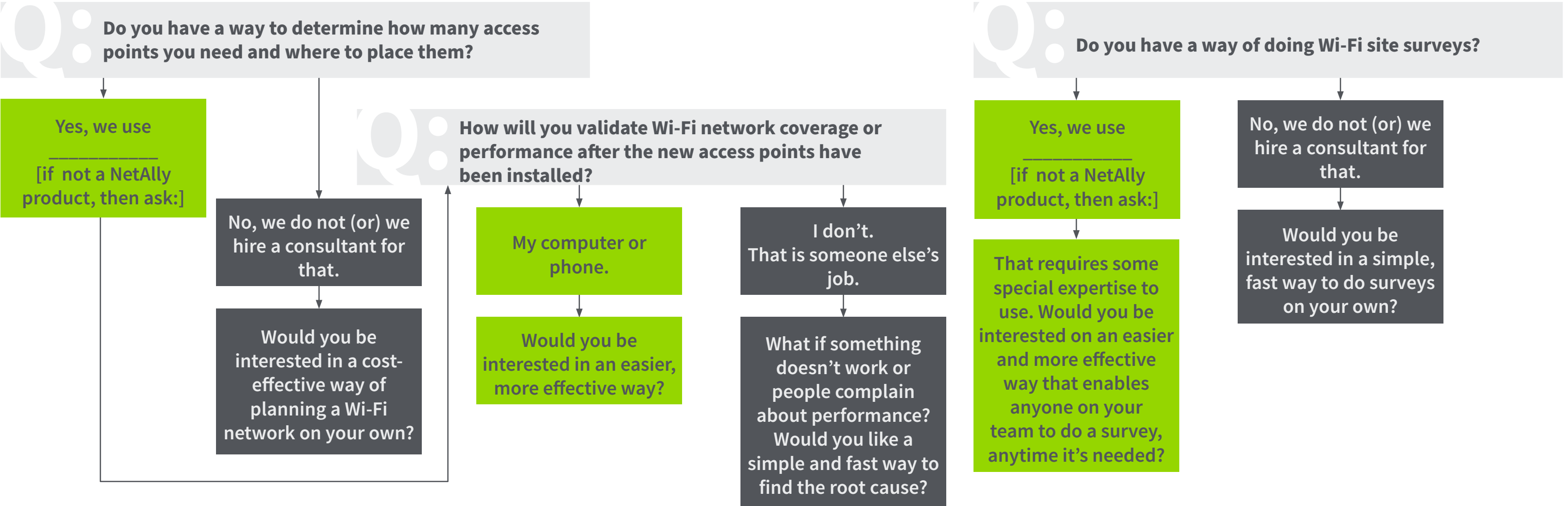


Be sure to add AllyCare Premium Support to your NetAlly sales! For more information, see [AllyCare Premium Support](#).

How to Use this Guide	Who We Are	Featured Products	IF YOU ARE SELLING...				IF YOU ARE PROSPECTING			
			Wi-Fi APs & Controllers	Network Switches 1G/10G/Multi-Gig	PoE / IoT Devices	Cybersecurity	Troubleshooting & Securing Wi-Fi Networks	Network Health & Troubleshooting	Help Desk	Cybersecurity Teams

If you are selling...

Wireless Access Points, ask these questions:



If there's interest in a solution for:

- Wi-Fi planning solution, you should offer: [AirMagnet® Survey PRO](#)
- Validation or site survey solution, you should offer: [AirCheck™ G3 Pro Wireless Analyzer](#)
- Wi-Fi and wired ethernet testing, you should offer: [EtherScope® nXG Portable Network Expert](#)



How to Use this Guide	Who We Are	Featured Products	IF YOU ARE SELLING...				IF YOU ARE PROSPECTING			
			Wi-Fi APs & Controllers	Network Switches 1G/10G/Multi-Gig	PoE / IoT Devices	Cybersecurity	Troubleshooting & Securing Wi-Fi Networks	Network Health & Troubleshooting	Help Desk	Cybersecurity Teams

If you are selling...

Network Switches, ask these questions:

Q: How does your team verify and document if the switch ports are provisioned correctly?

I use a computer.

Computers can't test fiber connections, PoE voltage and power or cabling. Wouldn't it save you a lot of time if you could quickly verify and document the nearest switch port connected and the port's configurations? That way you can quickly isolate problems between the end-device, the cabling, and the switch.

Would you be interested in a better solution?

Q: When you are troubleshooting issues with an Ethernet-connected device, do you have a way to quickly find out the switch port that it is connected to?

Yes.

No.

How do you verify that the Multi-Gig (or 10 Gig) switch is delivering the speed and performance needed?

Would you be interested in a better solution?

We use a computer to verify links.

We don't.

Computers can't test fiber, PoE voltage and power, or cabling, they also can't connect at Multi-Gig or 10Gig. PC's don't have the capability to automatically verify and document the switch name, port number, and the actual port speed that the switch supports.

Multi-Gig and 10 Gig switch ports support a function called downshift where it will switch to a lower speed in a noisy environment. If you don't verify its performance, how do you know you are getting your money's worth? Worst of all, you could be blamed for poor performance.

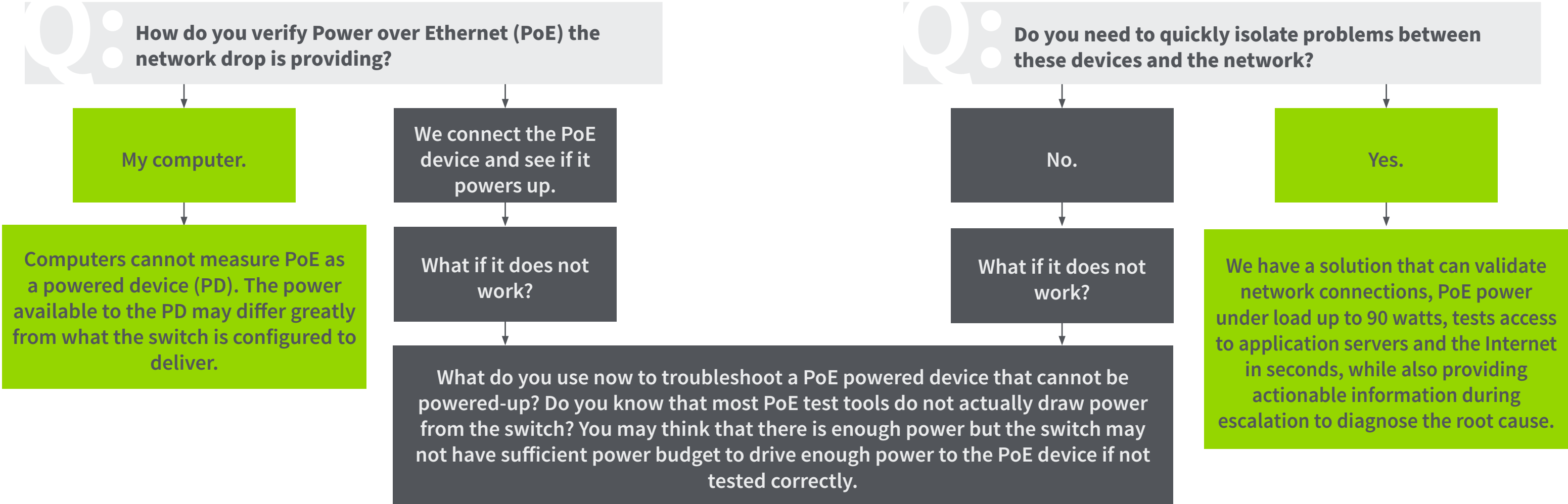
If there's interest in a solution for:

- A
- Customer has/is buying Multi-Gig or 10Gig switches, you should offer [LinkRunner® 10G Advanced 10G Network & Cable Tester](#)
 - Customer has/is buying 1Gig switches, you should offer [LinkRunner® AT 4000 Advanced Ethernet Tester](#)
 - Customer is looking for a low-cost solution, you should offer [LinkRunner® AT 3000 Copper & Fiber Ethernet AutoTester](#)

How to Use this Guide	Who We Are	Featured Products	IF YOU ARE SELLING...				IF YOU ARE PROSPECTING			
			Wi-Fi APs & Controllers	Network Switches 1G/10G/Multi-Gig	PoE / IoT Devices	Cybersecurity	Troubleshooting & Securing Wi-Fi Networks	Network Health & Troubleshooting	Help Desk	Cybersecurity Teams

If you are selling...

PoE or IoT Devices Security Cameras, Badge Scanners, VoIP phones, etc., ask these questions:

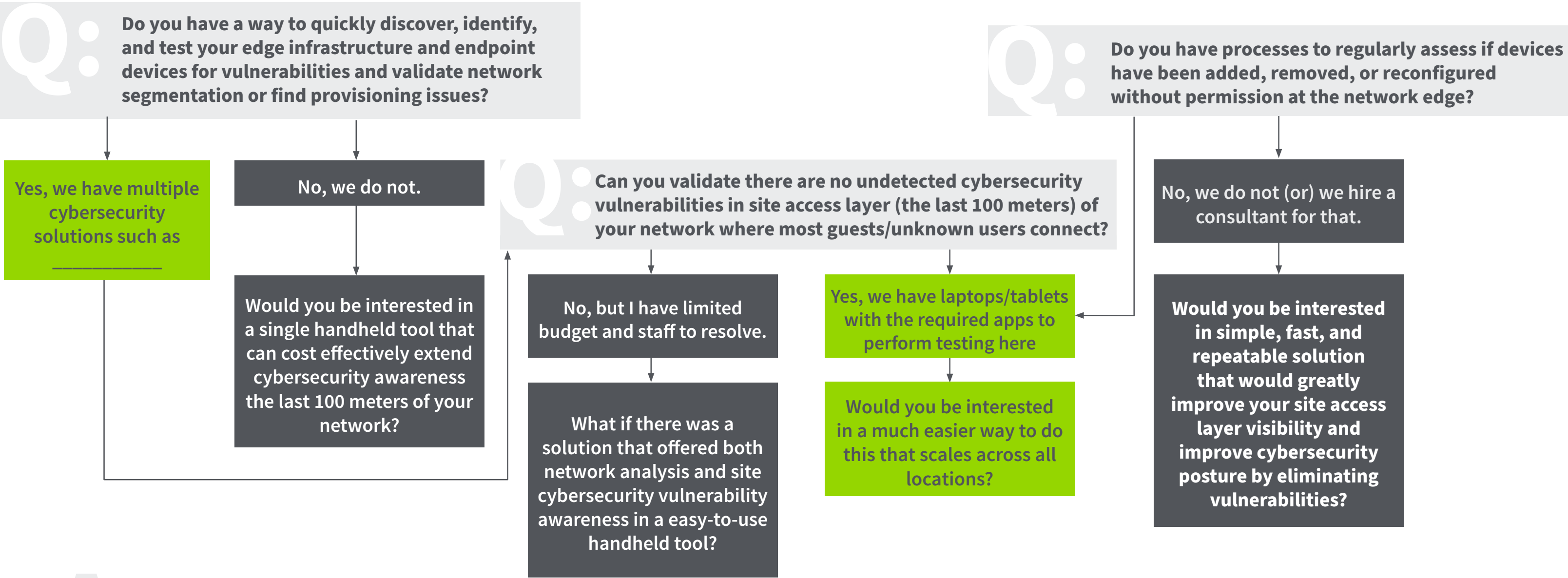


If there's interest in a solution: [LinkRunner® AT 3000 Copper & Fiber Ethernet AutoTester](#)

How to Use this Guide	Who We Are	Featured Products	IF YOU ARE SELLING...				IF YOU ARE PROSPECTING			
			Wi-Fi APs & Controllers	Network Switches 1G/10G/Multi-Gig	PoE / IoT Devices	Cybersecurity	Troubleshooting & Securing Wi-Fi Networks	Network Health & Troubleshooting	Help Desk	Cybersecurity Teams

If you are selling...

Cybersecurity Solutions, ask these questions:



A: If there's interest in a solution for:

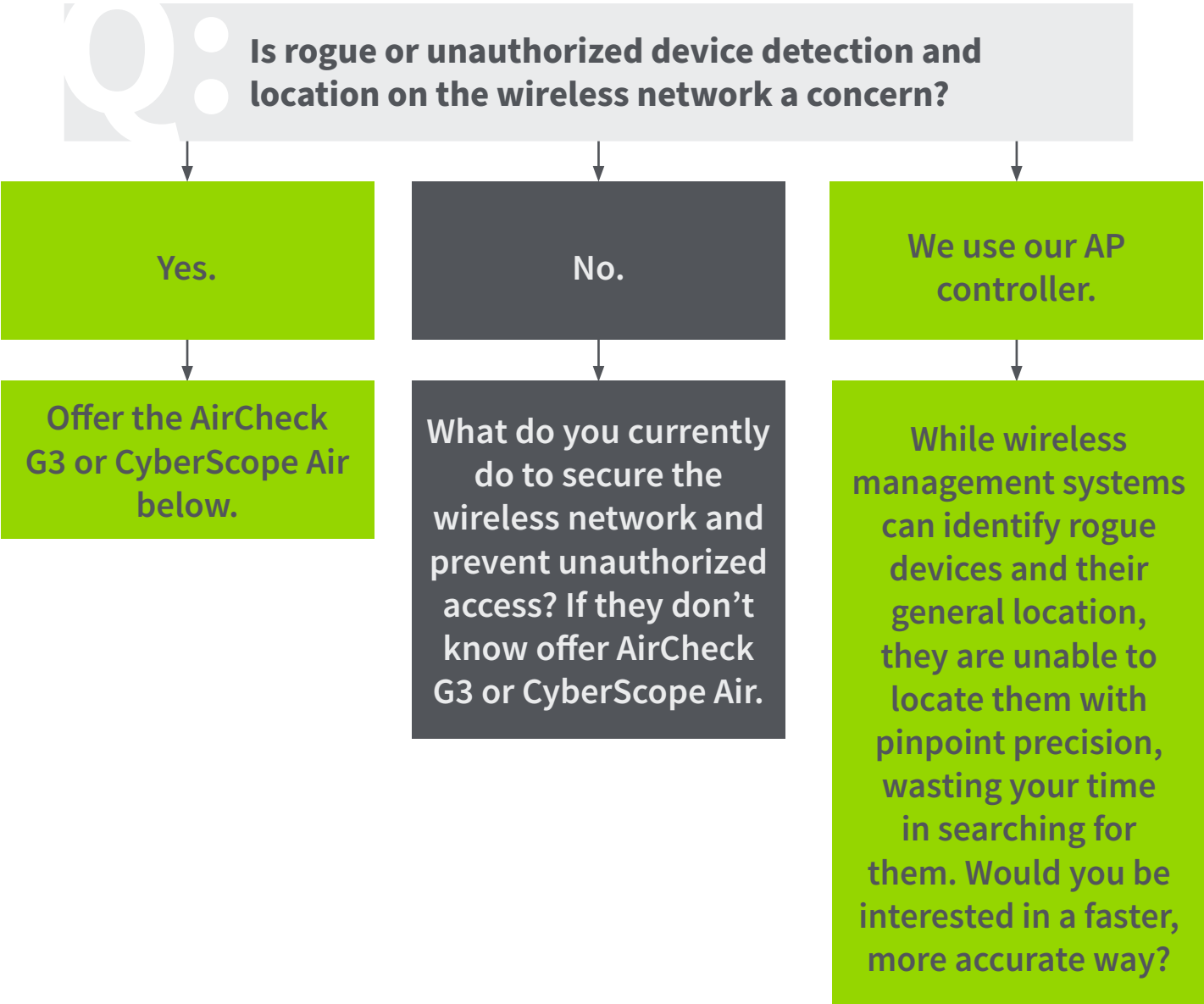
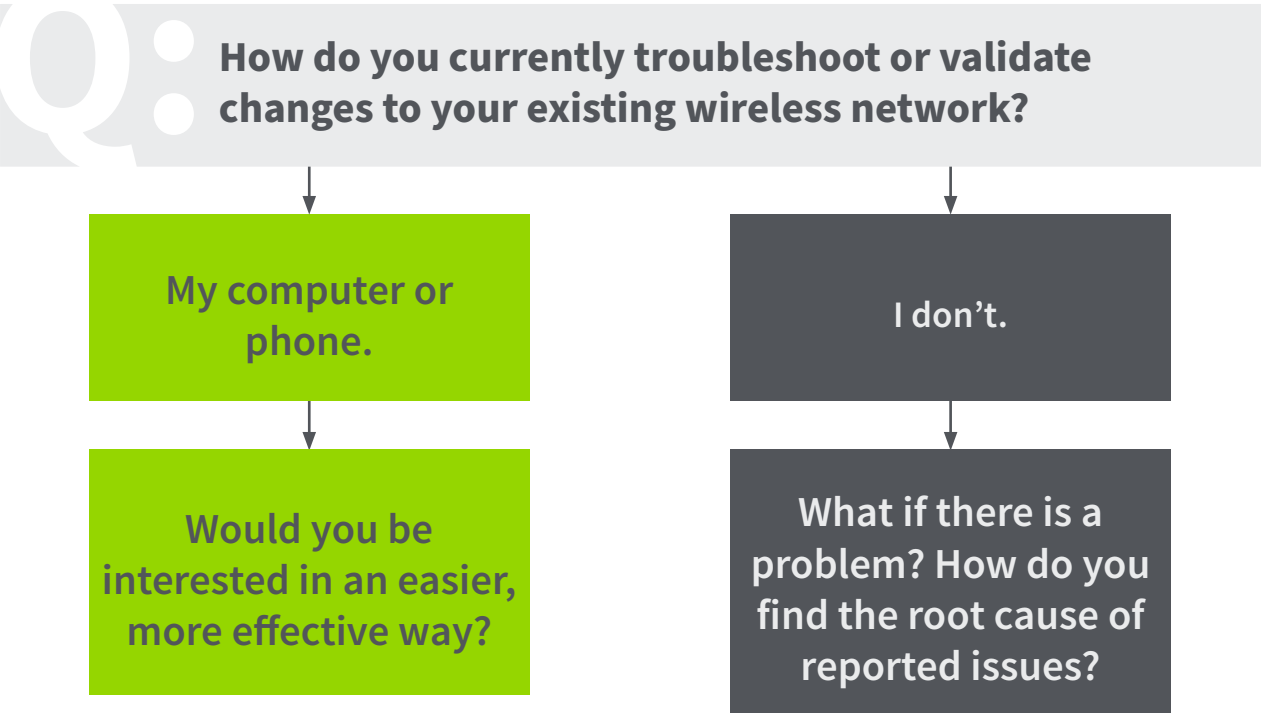
- Dual network analyzer/site-based cybersecurity vulnerability scanning solution, your should offer: [CyberScope® Edge Network Vulnerability Scanner](#)

How to Use this Guide	Who We Are	Featured Products	IF YOU ARE SELLING...				IF YOU ARE PROSPECTING			
			Wi-Fi APs & Controllers	Network Switches 1G/10G/Multi-Gig	PoE / IoT Devices	Cybersecurity	Troubleshooting & Securing Wi-Fi Networks	Network Health & Troubleshooting	Help Desk	Cybersecurity Teams

Does your customer need help with...

Troubleshooting or Securing Wi-Fi Networks?

Ask these questions:



If there's interest in a solution, then ask...

Do you also have to solve problems on the wired network?

Yes: You should offer [EtherScope® nXG Portable Network Expert](#)

No: You should offer [AirCheck™ G3 Pro Wireless Analyzer](#) or [CyberScope® Air Wi-Fi Vulnerability Scanner](#)

How to Use this Guide	Who We Are	Featured Products	IF YOU ARE SELLING...				IF YOU ARE PROSPECTING			
			Wi-Fi APs & Controllers	Network Switches 1G/10G/Multi-Gig	PoE / IoT Devices	Cybersecurity	Troubleshooting & Securing Wi-Fi Networks	Network Health & Troubleshooting	Help Desk	Cybersecurity Teams

Does your customer need help with...

Network Health & Troubleshooting?
 Ask these questions:

Q: Do you have an effective practice that allows your technicians to quickly conduct an audit of the wired and Wi-Fi network after changes or when you get trouble tickets?

Yes.

Would you like your technicians to be able to get more done faster with just one tool?
 A tool that automatically verifies and documents both Wi-Fi and wired networks, and with much less training?

No.

Have you ever been called back to fix issues on a network that you deployed, and found that your work did not cause the problem?
 An effective network audit will help detect and isolate pre-existing conditions before and after you do your work when troubleshooting.
 Does that sound useful?

Q: What tools do you or your team bring when they conduct network acceptance tests or respond to trouble calls?

A PC and Cable Tester.

Does it ever take too long, or require multiple trips to isolate problems? Especially when the problem is intermittent?
 Would it be easier if you can have a tool that you can dispatch or leave behind to help you troubleshoot the problem remotely?

Multiple testers, apps, laptops.

Is it difficult getting your technicians trained to use multiple tools effectively?
 What if you had one multi-functional tester that empowers your technicians with testing up to 10 Gig Ethernet and Wi-Fi? And it was an all in one tool that's simple for technicians to operate but powerful enough for engineers, with the ability to connect over the network to help troubleshoot issues without being on-site?



If there's interest in a solution offer: [EtherScope® nXG Portable Network Expert](#)

How to Use this Guide	Who We Are	Featured Products	IF YOU ARE SELLING...				IF YOU ARE PROSPECTING			
			Wi-Fi APs & Controllers	Network Switches 1G/10G/Multi-Gig	PoE / IoT Devices	Cybersecurity	Troubleshooting & Securing Wi-Fi Networks	Network Health & Troubleshooting	Help Desk	Cybersecurity Teams

Does your customer need help with...

Empowering Frontline/Help Desk Staff?

Ask these questions:

Q:

We’ve had a number of customers in network operations who are concerned with how many trouble tickets get escalated to them from help desk or frontline support staff.

They found that equipping those teams with simple, low-cost tools can dramatically reduce network-related escalations.

Is that an issue in your organization? Would you like to limit escalations about Ethernet network connectivity?

Yes.

Q:

Does your staff need to quickly validate changes to Ethernet drops? How do they do that?

They use a laptop.

Most computers don’t have RJ45 ports anymore, and they can’t test PoE voltage and power, or cabling.

Wouldn’t it save you a lot of time if you could quickly verify and document the nearest switch port connected and the port’s configuration?

A: If there’s interest in a solution offer: [LinkSprinter® Pocket Network Tester](#)

How to Use this Guide	Who We Are	Featured Products	IF YOU ARE SELLING...				IF YOU ARE PROSPECTING			
			Wi-Fi APs & Controllers	Network Switches 1G/10G/Multi-Gig	PoE / IoT Devices	Cybersecurity	Troubleshooting & Securing Wi-Fi Networks	Network Health & Troubleshooting	Help Desk	Cybersecurity Teams

Does your customer need help with...

Enabling Cybersecurity Teams to Edge Network Vulnerability Scanning?

Ask these questions:

Q: In using NetAlly network connectivity and analysis tools, we’ve had numerous customers express concerns about ensuring their edge networks do not contain hidden vulnerabilities that could expose them to cybersecurity threats. Is this an issue in your organization? Would you be interested in a simple, repeatable process to proactively address this potential issue?

Yes.

No.

There is a solution that would enable this, offering fast, ongoing site level assessments that highlight vulnerabilities, make sharing critical data across the team easy, and serve as an important input into a full cybersecurity audit.
Would you like to learn more?

How frequently are you able to validate your site cybersecurity posture?
Do you have a documented site assessment methodology that complements your existing security solutions and helps to address their gaps?

Q: After a breach has occurred at the network edge, would it be useful for you staff to have a fast and reliable method to validate the threat is contained, compromised network assets and data are identified, and the “all clear” can be communicated?

Yes.

No.

You need a tool designed specifically to holistically address post-event breach management and mitigation at the site level where other solutions often cannot help. It must be easy-to-use and fast to deploy since time to resolution is critical and assessing the entire site is a must.
Would you like to learn more?

A portable tool that is easy-to-use by remote staff is crucial to addressing the breach. The right solution, with remote access by team leads anywhere in the world extends cybersecurity staff expertise to every location, making comprehensive assessments fast and easy

A:

If there’s interest in a solution offer: [CyberScope® Edge Network Vulnerability Scanner](#)

How to Use this Guide	Who We Are	Featured Products	IF YOU ARE SELLING...				IF YOU ARE PROSPECTING			
			Wi-Fi APs & Controllers	Network Switches 1G/10G/Multi-Gig	PoE / IoT Devices	Cybersecurity	Troubleshooting & Securing Wi-Fi Networks	Network Health & Troubleshooting	Help Desk	Cybersecurity Teams

You should offer:

AirCheck™ G3 Wi-Fi 6 Wireless Analyzer

Designed for network professionals who need to validate that the WLAN is working or need to resolve problems related to connectivity and performance.

- AirCheck G3 offers a one-button AutoTest function that quickly provides a pass/fail indication of Wi-Fi network quality and identifies common problems
- Faster and easier Wi-Fi site surveys with AirMapper Site Survey
- Test the most common Wi-Fi standards (including Wi-Fi 6) with a rugged, handheld, purpose-built wireless tester
- See all networks, devices and Wi-Fi activity in your location immediately upon power up
- View test results, including network availability, connectivity, utilization, throughput, security settings, possible rogues, and interferers
- Automate reporting and enable collaboration with test result upload and management via Link-Live collaboration, reporting, and analysis platform.



Talking Points

- The AirCheck G3 Wi-Fi Analyzer greatly simplifies the process of validating Wi-Fi network coverage, client connectivity & roaming, channel utilization, upload and download speeds, interference levels, and network configurations.
- It can pinpoint the location of clients, AP’s, and unauthorized or interfering devices on your network – more accurately and easier than Wi-Fi management software.
- Surveys are fast and easy with the AirMapper app on the unit and NetAlly’s Link-Live reporting and analysis platform– it doesn’t require specialized expertise, and quickly visualizes your network for validation or troubleshooting.

Would you like me to add the AirCheck G3 Wireless Analyzer to your quote?

Manufacturer Part Number: **AIRCHECK-G3-PRO-KT**



How to Use this Guide	Who We Are	Featured Products	IF YOU ARE SELLING...				IF YOU ARE PROSPECTING			
			Wi-Fi APs & Controllers	Network Switches 1G/10G/Multi-Gig	PoE / IoT Devices	Cybersecurity	Troubleshooting & Securing Wi-Fi Networks	Network Health & Troubleshooting	Help Desk	Cybersecurity Teams

You should offer:

CYBERSCOPE® Edge Network Vulnerability Scanner

CyberScope empowers security practitioners quickly to discover, validate, and assess cybersecurity at the network edge in a single, powerful, portable tool.

- Easily validates security controls at the edge
- Inventories everything including IoT, OT, unmanaged devices, wired and wireless
- Quickly tests and demonstrates policy compliance
- Enables collaboration and sharing between teams
- Integrates network topology mapping plus AirMapper™ Site Survey for Wi-Fi and Bluetooth/BLE
- Offers comprehensive network segmentation analysis; queries switch ports for correct provisioning and captures traffic on suspicious activity
- Leverages the power of Nmap for endpoint assessment and vulnerability detection to help identify threat vectors



Talking Points

- As a ruggedized, purpose-built all-in-one tool, CyberScope is a network security solution that eliminates the use of fragile laptops and tablets. With multiple functions, it provides fast, actionable insights on-prem into your edge networks, filling the critical visibility gaps that other cybersecurity tools frequently do not address.
- CyberScope empowers security practitioners to quickly discover, identify, and test edge infrastructure and IoT, OT, and ICS devices, wired (Ethernet/Fiber) and Wi-Fi networks, then assess cybersecurity posture against policies, generate reports and perform ongoing monitoring—all without deploying agents.

Would you like me to add the CyberScope to your quote?

Manufacturer Part Number: **CYBERSCOPE-CE** or **CYBERSCOPE-AIR**

For wired and wireless network vulnerability scanning, recommend CYBERSCOPE-CE
For wireless only, recommend CYBERSCOPE-AIR

How to Use this Guide	Who We Are	Featured Products	IF YOU ARE SELLING...				IF YOU ARE PROSPECTING			
			Wi-Fi APs & Controllers	Network Switches 1G/10G/Multi-Gig	PoE / IoT Devices	Cybersecurity	Troubleshooting & Securing Wi-Fi Networks	Network Health & Troubleshooting	Help Desk	Cybersecurity Teams

You should offer:

EtherScope® nXG Portable Network Expert

Multi-technology, all-in-one handheld network analyzer that enables engineers and technicians to get more done faster, from deployment to maintenance and documentation of their ever-changing Wi-Fi, Bluetooth/BLE, and Ethernet access networks.

- Install, test, verify, and troubleshoot technology upgrades, NBASE-T, 10G, and Wi-Fi6/6E networks with advanced troubleshooting apps and purpose-built test hardware
- Verify up to 10G Ethernet link performance for critical servers, uplinks and key end devices, and validate Wi-Fi network performance
- Empower technicians who may not have access to network management systems or other engineer-level tools to assess and document complex network deployments with multiple VLANs and Wi-Fi SSIDs
- Seamlessly consolidate and manage field test data, and integrate with network management systems via Link-Live collaboration, reporting, and analysis platform.



Talking Points

- The EtherScope nXG is a multi-technology, all-in-one handheld network analyzer that enables engineers and technicians to get more done faster, from deployment to troubleshooting and documentation of Wi-Fi and Ethernet access networks – and it verifies the equipment you install is performing as expected.
- AirMapper™ Site Survey App – EtherScope nXG users can quickly and easily gather location-based Wi-Fi measurements and create visual heat maps of key performance metrics in the Link-Live Cloud Service. Simple to use, the AirMapper app is ideal for quick site surveys of new deployments, change validation, and performance verification.

Would you like me to add the EtherScope nxG to your quote?
Manufacturer Part Number: **EXG-300-KIT**

How to Use this Guide	Who We Are	Featured Products	IF YOU ARE SELLING...				IF YOU ARE PROSPECTING			
			Wi-Fi APs & Controllers	Network Switches 1G/10G/Multi-Gig	PoE / IoT Devices	Cybersecurity	Troubleshooting & Securing Wi-Fi Networks	Network Health & Troubleshooting	Help Desk	Cybersecurity Teams

You should offer:

LinkRunner® 10G

Advanced 10G Network & Cable Tester

Cost-Effective, Line-Rate 10Gig Ethernet Testing

- Install, test, verify, and troubleshoot technology upgrades, and 1 Gig to 10 Gig networks with advanced troubleshooting apps and purpose-built test hardware
- Physical layer testing includes cable testing, toning, wiremapping, and multi-gig link validation
- Compatibility with a variety of fiber connectors enables test and validation of any cable type, copper or fiber
- Validate up to 90 watts with TruePower™ load testing
- Serves as an endpoint to the EtherScope nXG or another LinkRunner 10G for line-rate performance testing to verify network capacity, performance and QoS, as well as service provider SLAs between sites
- Programmable periodic AutoTest monitors for intermittent issues with email notifications through the Link-Live cloud service
- Seamlessly consolidate and manage field test data, automate reporting, and integrate with network management systems via Link-Live collaboration, reporting, and analysis platform.



Talking Points

- The LinkRunner 10G is a cost-effective solution for 10 Meg to 10 Gig network testing, including Multi-Gig, and simplifies testing and configuration of copper and fiber Ethernet networks with a combination of essential functions for network installation and triage in a single, ruggedized unit.
- This next-generation tester delivers complete network validation and troubleshooting, from the media (copper/fiber) to the application (layers 1 – 7), accelerating deployments, speeding problem identification, and improving the efficiency and effectiveness of network installers and operations teams.

Would you like me to add the LinkRunner 10G to your quote?

Manufacturer Part Number: **LR10G-200-KIT**



		IF YOU ARE SELLING...					IF YOU ARE PROSPECTING			
How to Use this Guide	Who We Are	Featured Products	Wi-Fi APs & Controllers	Network Switches 1G/10G/Multi-Gig	PoE / IoT Devices	Cybersecurity	Troubleshooting & Securing Wi-Fi Networks	Network Health & Troubleshooting	Help Desk	Cybersecurity Teams

AirMapper™ Site Survey

Quickly and easily gather location-based Wi-Fi measurements and create visual heat maps of key performance metrics in Link-Live™ or AirMagnet® Survey PRO.

- Conduct quick Wi-Fi 6E and Bluetooth/BLE site surveys of new or existing deployments, change validation, and performance verification
- Measure signal coverage, SNR, AP coverage, adjacent and co-channel interference, Tx/Rx Rates, and more
- Gain insights into user experience to avoid performance complaints and costly Wi-Fi network re-design
- Upload and visualize survey results via Link-Live collaboration, reporting, and analysis platform.



Talking Points

- AirMapper Site Survey app for the AirCheck™ G3, CyberScope®, or EtherScope® nXG provides accurate and complete heat maps by measuring Wi-Fi performance from the perspective of other mobile devices WITHOUT the need for cumbersome laptops, dongles, or tethered devices.
- Users can map RF signal coverage, noise, interference – and more! – and visualize Wi-Fi network performance at every location on the floor. The ease and portability of this solution enables technicians to quickly troubleshoot or validate the Wi-Fi network by measuring the real-world experience of mobile device users.*
- With the Link-Live service or AirMagnet Survey PRO creating powerful visualizations of the recorded data, centralized engineers can analyze test results from far-flung remote sites without travel.



NOTE: AirMapper enhanced site survey visualizations, Network Topology Mapping, Network Discovery, and Remote View/Control are available to customers with AllyCare Premium support.



How to Use this Guide	Who We Are	Featured Products	IF YOU ARE SELLING...				IF YOU ARE PROSPECTING			
			Wi-Fi APs & Controllers	Network Switches 1G/10G/Multi-Gig	PoE / IoT Devices	Cybersecurity	Troubleshooting & Securing Wi-Fi Networks	Network Health & Troubleshooting	Help Desk	Cybersecurity Teams

You should offer:

LinkRunner® AT 4000 Advanced Ethernet Tester

Advanced copper and fiber network testing, diagnostics, discovery, and mapping

- Provides deep visibility, diagnostics, and packet capture for network technicians and engineers to quickly resolve issues impacting single or multiple devices and network segments.
- Automatically discovers, inventories, and documents network infrastructure devices, endpoints, and connection paths across multiple VLANs and subnets; detects common problems and generates topology maps in Link-Live.
- Comprehensive AutoTest validates and troubleshoots all aspects of network connectivity and services.
- Verifies available link speed from 10Mbps to 10Gbps, tests PoE, identifies connected switch port and VLAN.



Talking Points

- The LinkRunner AT 4000 is an advanced cable and network tester for Multigigabit NBASE-T and fiber Ethernet networks, including comprehensive network discovery and topology mapping with advanced diagnostics and problem detection for in-depth troubleshooting. It automatically uploads test results to NetAlly's Link-Live platform for reporting and project management.
- Using network discovery and layer 2 and 3 path analysis, the LinkRunner AT 4000 offers comprehensive network visibility to help resolve issues impacting multiple devices – not just a single link – while still providing the automated tests for fast moves/adds/changes validation and troubleshooting.

Would you like me to add the LinkRunner AT 4000 to your quote?

Manufacturer Part Number: **LRAT-4000-KIT** or **LRAT-4000**

How to Use this Guide	Who We Are	Featured Products	IF YOU ARE SELLING...				IF YOU ARE PROSPECTING			
			Wi-Fi APs & Controllers	Network Switches 1G/10G/Multi-Gig	PoE / IoT Devices	Cybersecurity	Troubleshooting & Securing Wi-Fi Networks	Network Health & Troubleshooting	Help Desk	Cybersecurity Teams

You should offer:

LinkRunner® AT 3000

Copper & Fiber Ethernet AutoTester

Next generation copper and fiber Ethernet AutoTester validates Ethernet connectivity in less than 10 second

- Comprehensive AutoTest validates and troubleshoots all aspects of network link connectivity and services.
- Verifies available link speed from 10Mbps to 10Gbps, tests PoE, identifies connected switch port and VLAN.
- Enables frontline technicians to quickly and thoroughly validate links, troubleshoot device connectivity, and document moves, adds, and changes.
- Automate reporting and enable collaboration with test result upload and management via Link-Live collaboration, reporting, and analysis platform.



Talking Points

- The LinkRunner AT 3000 is designed for frontline technicians who need fast and comprehensive validation of copper and fiber network links with powerful network connectivity troubleshooting. While offering the same core functions of its predecessors (LinkRunner AT 1000 and 2000 models), the LinkRunner AT 3000 features a large touchscreen and in-depth AutoTest that provides deeper network visibility.
- With tools designed to help with network changes and troubleshooting, this network tester’s quick cable test and switch identification functionality facilitates installation validation and fast problem isolation.
- Test results can be automatically uploaded to Link-Live to improve collaboration between network engineers and technicians, creating greater job visibility, project control, and fleet management.

Would you like me to add the **LinkRunner AT 3000 AutoTester** to your quote?
Manufacturer Part Number: **LRAT-3000-KIT** or **LRAT-3000**

How to Use this Guide	Who We Are	Featured Products	IF YOU ARE SELLING...				IF YOU ARE PROSPECTING			
			Wi-Fi APs & Controllers	Network Switches 1G/10G/Multi-Gig	PoE / IoT Devices	Cybersecurity	Troubleshooting & Securing Wi-Fi Networks	Network Health & Troubleshooting	Help Desk	Cybersecurity Teams

You should offer:

LinkSprinter®

Pocket Network Tester

A 10-second, simple network connectivity test on copper Ethernet links; Ideal for frontline/helpdesk staff.

- Discovers the nearest switch name and port information and verifies link speed and duplex, and connectivity
- Validate Power-over-Ethernet (PoE) voltage from power sourcing equipment (PSE) according to 30 watts
- View detailed test results, add comments, and run cable tests using your mobile device over a Wi-Fi hotspot that’s built into the LinkSprinter
- Automate reporting and enable collaboration with test results upload and management via Link-Live collaboration, reporting, and analysis platform.



Talking Points

- LinkSprinter is an affordable, pocket-sized tester that verifies the functionality of copper Ethernet links and identifies errors in less than 10 seconds. It checks Power over Ethernet, performs a switch port test, confirms that DHCP is running and responsive, and verifies Internet connectivity. The technician can connect to the tester using their mobile phone, and test results can be automatically uploaded via Link-Live, enabling job supervisors to easily manage the progress of deployment and troubleshooting tasks assigned to their team.

Would you like me to add the LinkSprinter to your quote?

- Single Unit - **LSPRNTR-300**
- Value Pack (Qty 5) - **LSPRNTR-300-5PK**
- Holster (Sold separately) - **LSPRNTR-HOLSTER**



How to Use this Guide	Who We Are	Featured Products	IF YOU ARE SELLING...				IF YOU ARE PROSPECTING			
			Wi-Fi APs & Controllers	Network Switches 1G/10G/Multi-Gig	PoE / IoT Devices	Cybersecurity	Troubleshooting & Securing Wi-Fi Networks	Network Health & Troubleshooting	Help Desk	Cybersecurity Teams

You should offer:

AirMagnet® Survey PRO

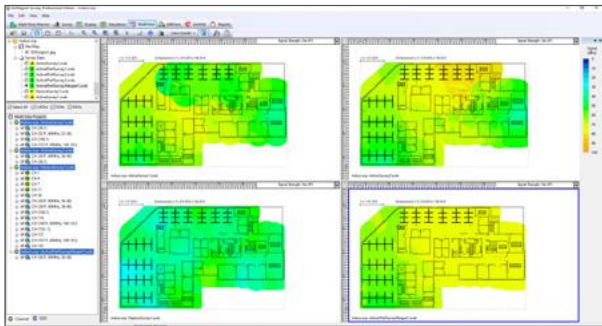
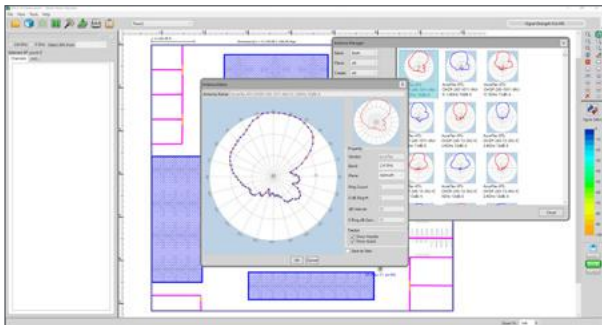
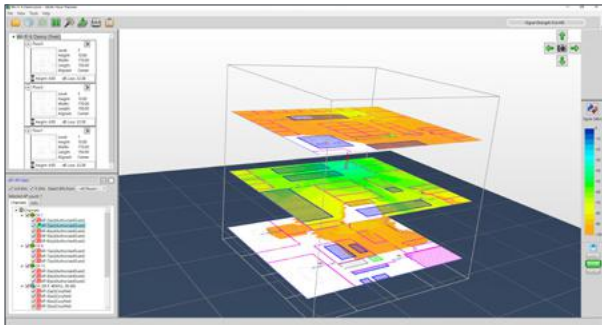
Wireless Design & Site Survey

Analysis Software



Design and deploy the most accurate indoor & outdoor Wi-Fi networks correctly the first time and prevent costly rework & IT complaints.

- Accurately design Wi-Fi 6/6E networks before rolling out any APs physically
- Collect real-world data by performing true end-user experience measurements using AirMapper™ Site Survey on the AirCheck™ G3, CyberScope®, and EtherScope® nXG
- Minimize expensive wireless LAN performance impact due to RF interference sources by performing spectrum surveys on the same walk-through
- Generate heatmaps that provide full visibility of WLAN coverage, noise, SNR, interference, throughput, data rates, retries, loss, and more on the 2.4GHz, 5GHz or 6GHz bands
- Save time by performing active and passive surveys in a single walk-through
- Easily customizable templates provide users with flexibility by allowing the creation of various professional reports



Talking Points

- Network professionals conducting and analyzing AirMapper Wi-Fi site surveys (using AirCheck G3 Pro, EtherScope nXG, or CyberScope) will many times find areas of the network with insufficient coverage or poor performance. Resolving those issues could require changes to the infrastructure, either installing new APs, relocating existing APs, and/or configuration changes
- With its powerful design tools AirMagnet Survey PRO enables network professionals to predictively model the required changes, ensuring that problems found during the AirMapper site survey are fixed correctly, resulting in improved Wi-Fi network performance and connectivity

Would you like me to add AirMagnet Survey PRO to your quote?
Manufacturer Part Number: **AM/A4018G**



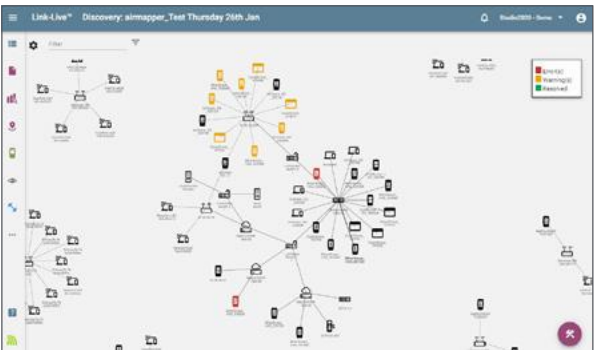
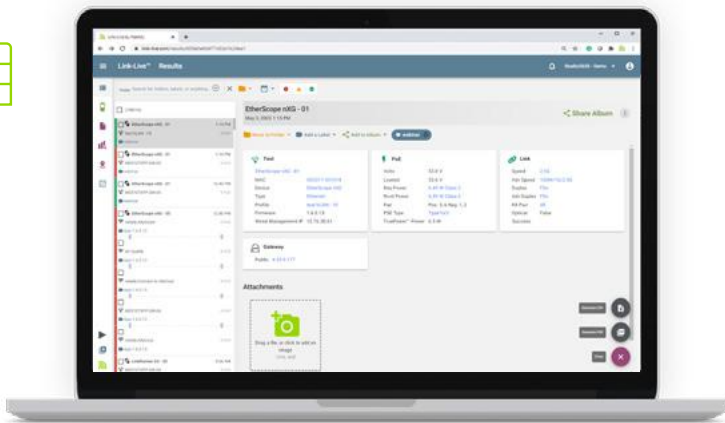
How to Use this Guide	Who We Are	Featured Products	IF YOU ARE SELLING...				IF YOU ARE PROSPECTING			
			Wi-Fi APs & Controllers	Network Switches 1G/10G/Multi-Gig	PoE / IoT Devices	Cybersecurity	Troubleshooting & Securing Wi-Fi Networks	Network Health & Troubleshooting	Help Desk	Cybersecurity Teams

Link-Live™ Collaboration, Reporting, & Analysis Platform



Unified results, reporting, analysis, Wi-Fi heat maps, network mapping, and data management enables collaboration across your entire team.

- Available as a free cloud service or licensed, containerized version for on-prem server/private cloud deployment
- Better manage jobs, improve staff efficiency, and facilitate team collaboration
- Generate Wi-Fi heat maps using the AirMapper™ Site Survey app on AirCheck G3, CyberScope, or EtherScope nXG
- Instantly map your wired and Wi-Fi networks using discovery data from AirCheck G3 , CyberScope, EtherScope nXG, LinkRunner AT 4000, or LinkRunner10G; exports to Visio.*
- Reduces results management overhead for multiple testers and users
- Simplifies report generation for network deployment documentation
- For asset management, ability to associate serial numbers of installed devices, and/or cable/wall jack label to specific tests



Talking Points

- Serving as a centralized test results, analysis and tester management system, the Link-Live Cloud Service transforms team workflows with the ability to quickly and easily log, document, and report test activity from all NetAlly handheld network testers and analyzers.
- Once the instrument is connected to Link-Live, your test results, site surveys, and network discovery data are automatically uploaded to the dashboard for project management, analysis, mapping, collaboration and reporting. You have the option of uploading additional files: screenshots, images, profiles, packet captures, location information, and comments anytime. Also, NetAlly testers with AllyCare Premium Support can receive firmware updates “over the network” from Link-Live as they become available.

Manufacturer Part Number:
LL-PRVT-G (software download)
LL-PRVT-SUM (annual subscription)



**NOTE: AirMapper enhanced site survey visualizations, detailed Network Topology Mapping controls, and Remote View/Control are available to customers with AllyCare Premium support.*

